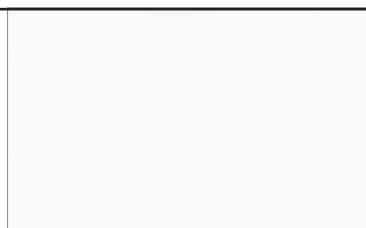


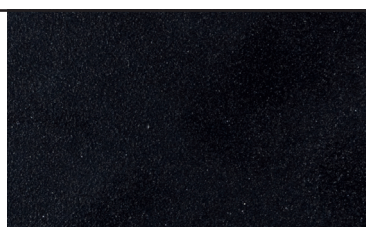
Finiture seriali Siderio

Siderio serial finishes

Bianco
White



Antracite
Anthracite



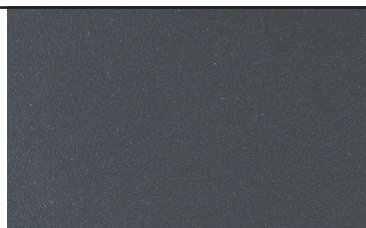
Ruggine
Rust



Ferro *chiaro*
Light Iron



Ferro *scuro*
Dark Iron



Bordeaux
Bordeaux



Categoria A
Category A

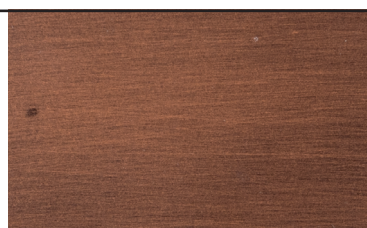
Ottone antico
Antique Brass



Bronzo antico
Antique Bronze



Rame antico
Antique Copper



Acciaio delabr 
Distressed Steel



RAL/NCS
RAL/NCS

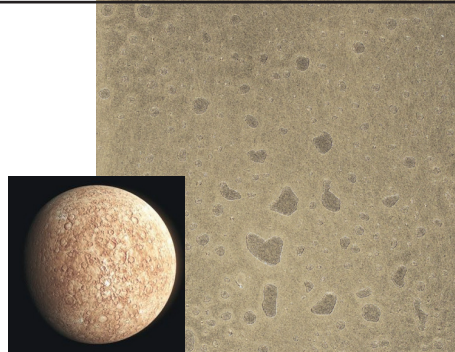


Categoria B
Category B

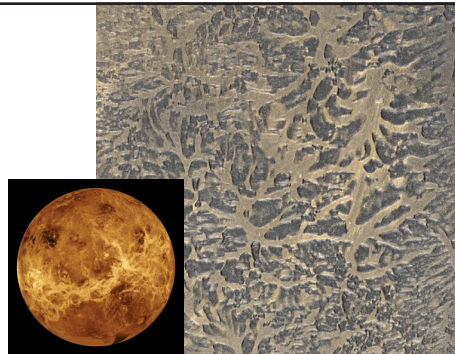
Finiture di progetto Siderio

Siderio project finishes

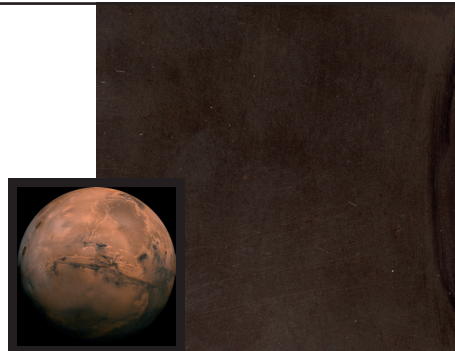
Mercurio
Mercury



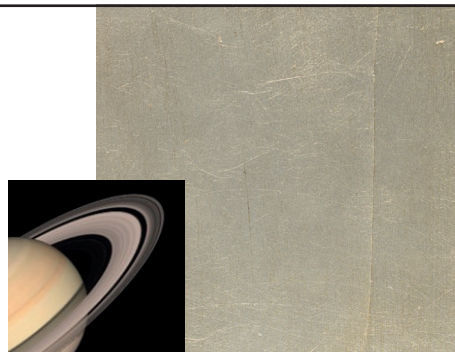
Venere
Venus



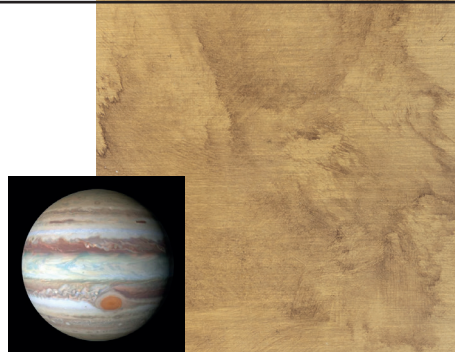
Marte
Mars



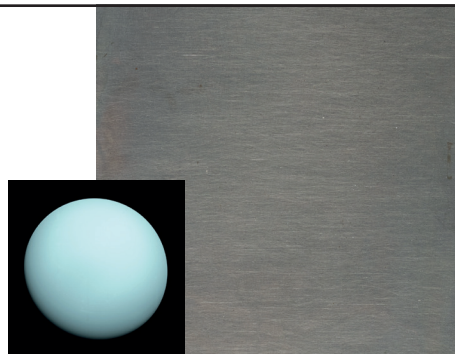
Saturno
Mars



Giove
Jupiter



Urano
Uranus



Nettuno
Neptune

